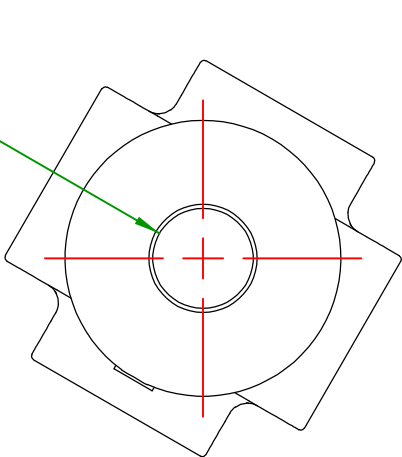
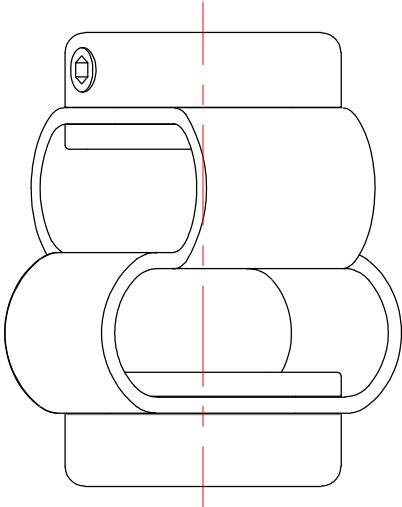
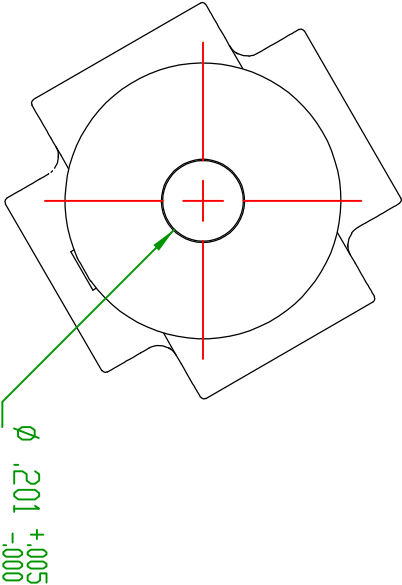
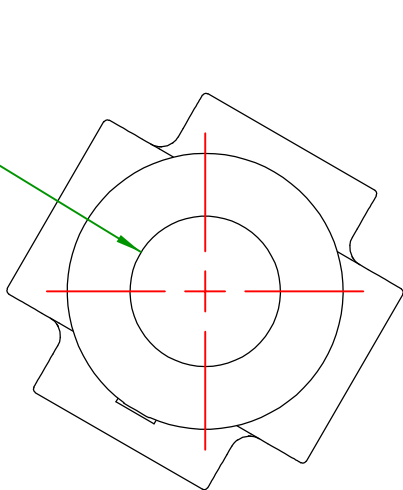
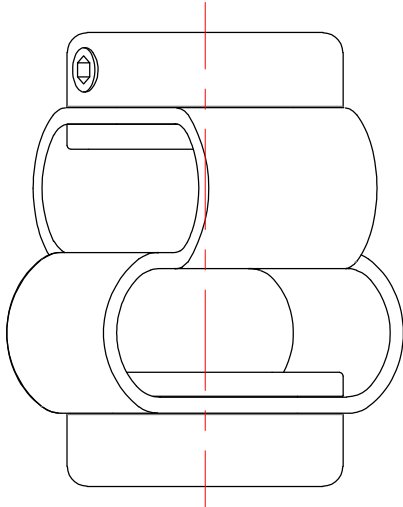
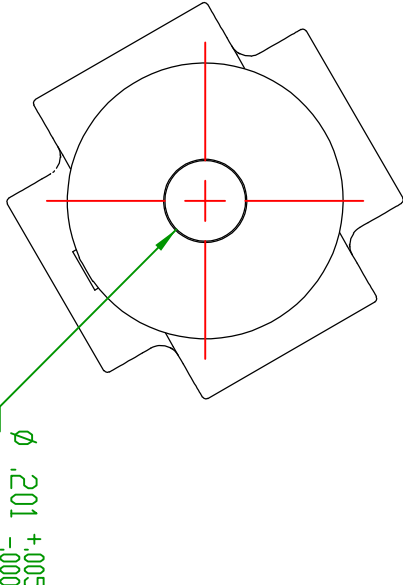



SYM	REVISION DESCRIPTION	DATE	APPROVED
A	FOR RELEASE	06/03/11	BES
B	HOLE WAS .196 [5mm]	10/15/14	BES



ITEM -01
PART# FTG008-0073



ITEM -02
PART# FTG008-0074

FTG008-0072		1	COUPLING DOUBLE LOOP 3/16" X 1/4"		McMC: 6183K32	1	
PART#	QTY	DESCRIPTION			DWG/PART#	ITEM	
THESE DRAWINGS AND SPECIFICATIONS ARE THE PROPERTY OF DENTON VACUUM, LLC AND SHALL NOT BE REPRODUCED, COPIED, OR USED AS THE BASIS FOR THE MANUFACTURE OR SALE OF APPARATUS WITHOUT PERMISSION.							
TOLERANCES ON DIMENSIONS UNLESS OTHERWISE SPECIFIED			DRAWN	DATE	<div> DENTON VACUUM LLC, MOORESTOWN, NJ</div>		
			BES	06/03/11			
BASIC DIMENSION	2 PLACE DECIMALS	3 PLACE DECIMALS					
UP TO 6	±.02	±.005	CHECKED				
ABOVE 6	±.03	±.010	DATE				
UP TO 24							
ABOVE 24	±.06	±.015	APPL.	DATE			
ANGULAR DIMENSIONS ± 1/2°							
ALL SURFACES TO BE 63√2 UNLESS OTHERWISE SPECIFIED.							
FILE: 0131-446-104 PART#: SEE TABLE							PROJ
					2:1	SHEET	
					1 OF 1	REV	
					B	B	